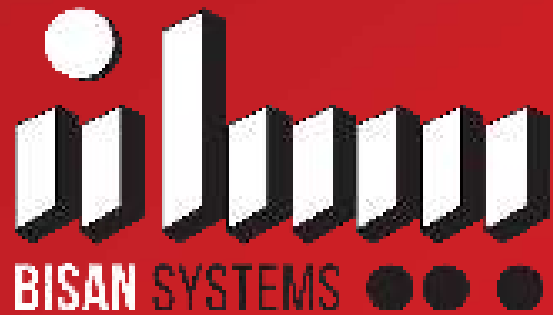


BISAN ERP TRADE & INDUSTRY



A reliable & comprehensive yet scalable ERP solution for small, medium & large sized enterprises; servicing a wide range of business sectors from service oriented to large industrial establishments. Bisan ERP offers customized modules for vertical sectors. Thus, providing the ultimate solution for your daily business activities anytime & anywhere.

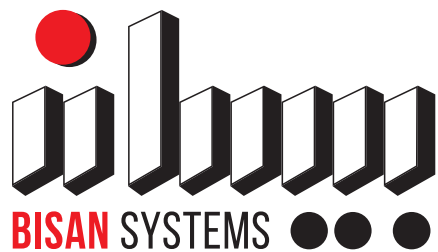


BISAN SYSTEMS LTD.
BATN EL HAWA STREET
P. O. BOX 530
RAMALLAH, PALESTINE

TEL: +970 2 298 5941
FAX +970 2 298 5942

JERUSALEM: +972 2 627 7196
JAWWAL: +970 599 677 904
OOREDOO: +970 562 900 020
JORDAN: +960 6 400 8017

USA: +1 617 902 2261
WHATSAPP +970599677904
info@bisan.com



O U R P U R P O S E

WHEREVER WE GO,

**WE IMPROVE
MANAGEMENT
DECISION MAKING.**

WHY BISAN?

BISAN ERP GENERAL FEATURES

BISAN ERP FINANCIAL FUNCTIONS

Financial Management

Sales & Marketing Management

Purchases, Inventory & Warehouse Management

BISAN ERP MODULES

Financial Budget

Sales Budget

Branch Management

Large Dealership

Workflow & Electronic Transaction Approval

Fixed Assets Management

Production Management

Campaigns & Loyalty

Payroll & Attendance

Human Resources Management & HR Portal

Online/Offline Point of Sale (POS)

Mobile Sales Application with Catalog View

Leasing

Fuel Station Management

Management of Crushers & Ready-mix Projects

Car Rental

Service Center

CYBERSECURITY & ACCESS RIGHTS

A GLIMPSE AT OUR PARTNERS

PRO VS. LITE COMPARISON

35+ YEARS OF EXCELLENCE

WHY BISAN?

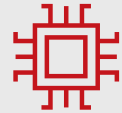
A fully integrated ERP solution serving the current and future needs of various sectors.

12,000+

Using Bisian Solutions



Available Anytime...
Anywhere



Zero Investment
in Hardware



A Modular Seamlessly
Integrated System with a
Single Point of Entry



Adaptable to your
own Business and
Industry Needs



100% Secure Access to
Real Time Information



International Market
Presence



Licensed in Many
Countries



Continuous Upgrades
at No Additional Cost



Cloud Application



Redundant Sites



Multi-layer Security



Fast and Comprehensive
Implementation



365 Days Support
Availability



An ERP Specifically
Designed to Meet
Today's Challenges



Available in Eight
Languages



Optimized Decision Making



Reliable

BISAN ERP GENERAL FEATURES

Bisan ERP is continuously upgraded with enhancements and new features to improve efficiency and provide higher accuracy.



TRULY MULTILINGUAL SYSTEM

A unique multilingual implementation providing the user the option to switch between desired languages at any given time during a session. An enhanced capability that allows entering sales vouchers in a certain language and printing it in another.



SPLIT VIEWS

A feature to split the view to multiple screens of the open tabs of files, transactions or reports in the system.



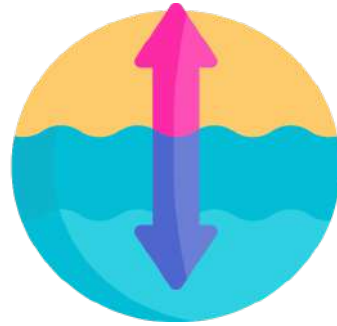
CLOUD ERP

The main screen is designed to clearly differentiate the application from the browser. The system supports all internet and intranet functionalities. The system is accessible from any internet connection, providing high data security.



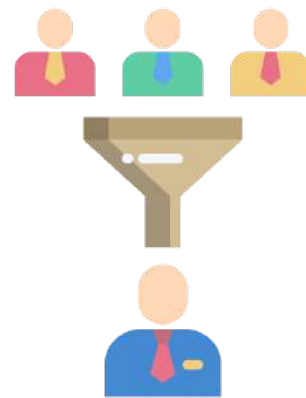
USER-FRIENDLY

The system provides user-friendly menus and graphics, a capability to hide, show and move columns around to customize screens per user. The menus and windows are designed in groups that deal with different cycles of accounting and management titles.



DRILL DOWN FUNCTIONALITY

A complete drill down functionality showing all details of each transaction on every report.



FILTERING CAPABILITIES

Capability to filter tables by excluding or including any criteria.



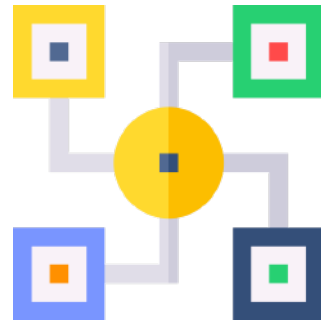
MACRO RECORDER

A tool to record recurring transactions for higher efficiency and productivity.



SMS INTEGRATION

Capability to send automated SMS notifications directly from the system per set configurable criteria for the accounts payable, accounts receivable, transactions and customer balances.



FULLY INTEGRATED MODULES

The package is fully integrated where all the data is entered through conventional vouchers directly on the screen. The system will eliminate the use of all paperwork whereby all transactions are entered once and automatically posted to corresponding modules, accounts and files.



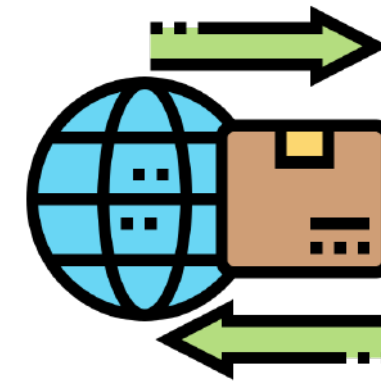
ADVANCED SEARCH FUNCTIONALITY

A unique detailed search mechanism which enables search in any given database, regardless of its size by searching through keywords or any other requested field. The search utilizes the Soundex algorithm that is especially handy for Arabic keyword searches.



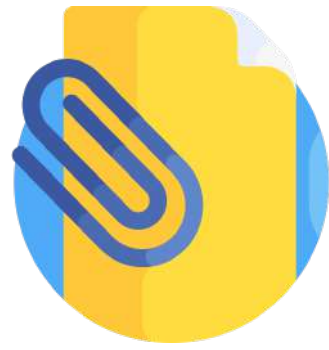
REPORTS EXPORT

Capability to export all generated reports to Excel, JSON, XML, Text and HTML files, which can be opened by any other spreadsheet or word processing software.



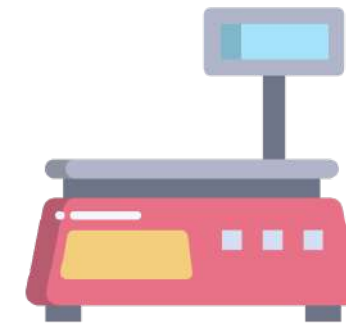
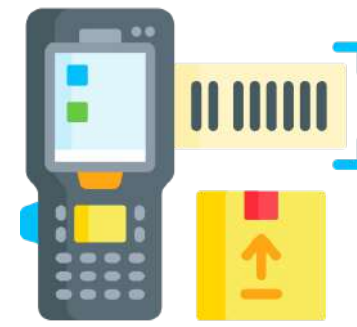
DATA IMPORT

Capability to import tables and lists from Excel, XML & Text with the appropriate account mapping and fields.



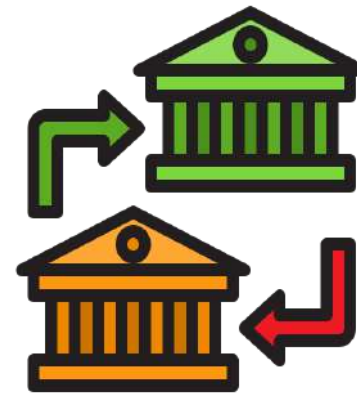
DOCUMENT ATTACHMENT

Ability to attach any file type with the related record or voucher, such as attaching purchase or expense invoices with related payment or journal voucher or attaching item picture with item file or for catalog view.



INTEGRATION WITH PERIPHERALS

Full integration with peripherals such as check readers and scanners, bar code readers, scales, document scanners and others.



BANK TRANSFER FORMS

User-defined HTML bank transfer forms printed directly from the payment vouchers.



MULTIPLE YEAR REPORTING

A full reporting capability per different periods and years allowing for multiple years reporting, overlapping years and cumulative periods.



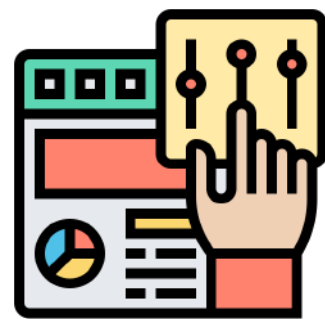
BARCODE READING & PRINTING

Integration with barcode readers for easy inventory taking and adding items in an invoice, in addition, to direct barcode printing for labels.



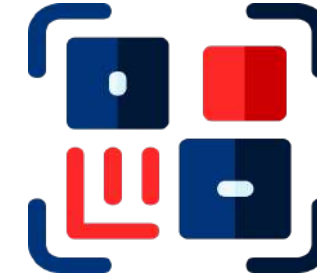
EMAIL INTEGRATION

Full integration with email systems, where single vouchers, such as purchase orders, invoices or receipts, could be sent. Also, bulk actions, such as pay slips or statements of accounts, are sent in PDF format as attachments to the e-mail and all transactions are logged and stored in the system for review.



CUSTOMIZED VIEWS

User customized views for all tables, to set preferences for certain criteria and they can be saved for future retrieval.



QR CODE FOR DELIVERY LOCATION

The ability to print a QR code on store issues and invoices indicating the contact's location for accurate and error free delivery.



USER PREFERENCES

An ability to define each user's language preference, setting default fields in transactions and customized views for tables.



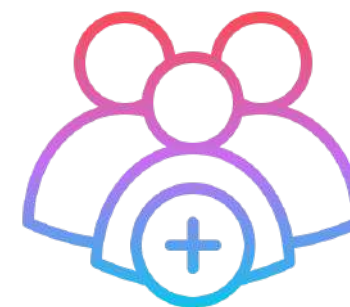
RECORD CLONING

To accelerate the data entry and to save time and effort, you can clone any record available, whether it is a file or a voucher. Thus, providing a powerful feature for using any available voucher as a template, rather than building a separate template per voucher.



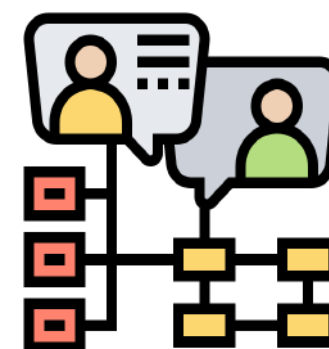
CHECK READING & PRINTING

Fully user-defined easy-to-use setup per bank account for check dimensions and available fields for any check format.



MULTIPLE USERS DEFINITION

Multiple users are each defined with assigned access rights up to the field level.



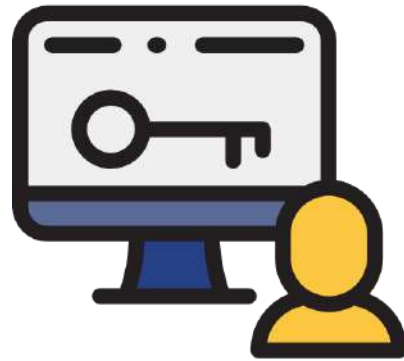
CONTACT LANGUAGE PREFERENCE

Regardless of the default language the user is working with, a language preference for each contact may be defined; for sending invoices and SMS messages in a preferred different language.



MULTI-TAB INTERFACE

The system allows the user to open different menus and tables at the same time, to add new records and modify existing ones without having to interrupt the transaction you are working on.



CUSTOMIZING USER SHORTCUTS & ICONS

The system provides consistent use of function keys and icons that are clearly defined. In addition, it provides a customized definition of shortcuts and icons per user.



DASHBOARD & WIDGETS

A dashboard including various widgets for easy reading of data and reports in the system.



NOTIFICATION ALERTS

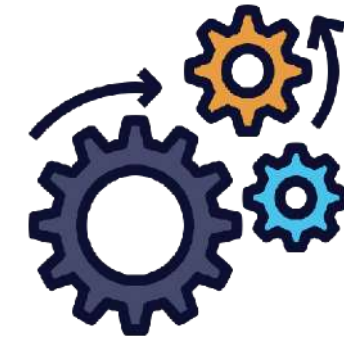
A feature to automatically generate customizable alerts from the system. These alerts include SMS messages, email notifications or pop-up messages on the screen.

ADDITIONAL FEATURES



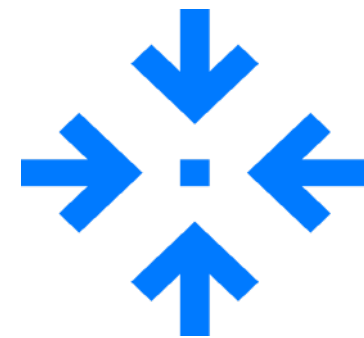
FULL AUDIT TRAIL

Every change in the system is audited on the field level, giving authorized users access to view all historical changes of any piece of data with who/what/where/and when information.



SEGMENTED ACCOUNTS

According to the type of your institution, whether manufacturing or service oriented, you could tailor segmented accounts to cope with management requirements.



API DATA EXCHANGE

A capability to integrate with third party systems by utilizing the API data exchange module, thus, saving time and effort in data entry and ensuring accuracy.

BISAN ERP FINANCIAL FUNCTIONS

FINANCIAL MANAGEMENT

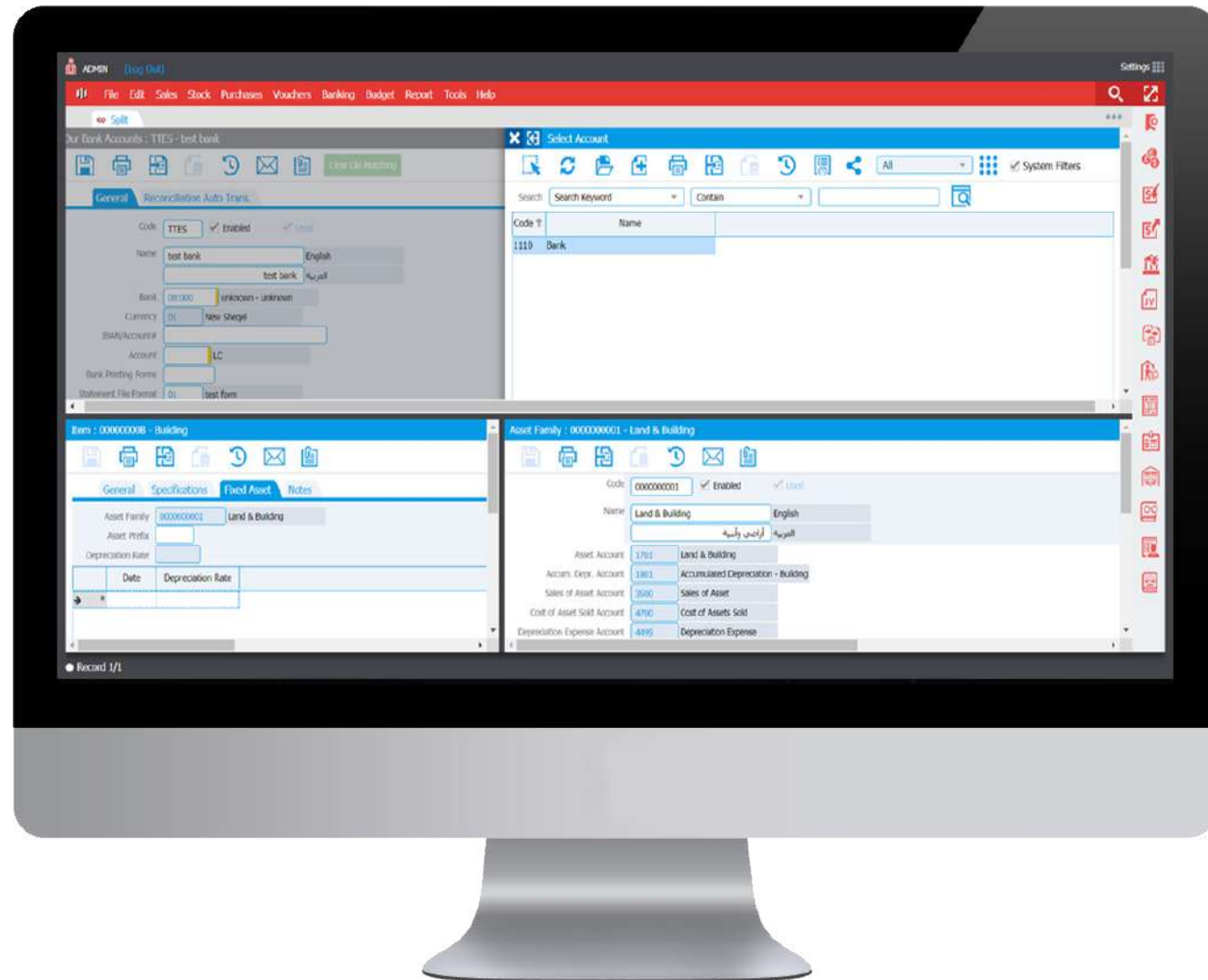
GENERAL LEDGER (GL)

A flexible chart of accounts with a multi-level file structure and multi-level segments; capturing all vouchers and financial transactions and providing flexible reporting capabilities for any specified period, including detailed information and a drill down functionality. A double-entry voucher system that is fully integrated to maintain all your financial entries in an accounting ledger.

ACCOUNTS RECEIVABLE & ACCOUNTS PAYABLE

A fully real time integrated module with the GL. It includes multi-currency accounts management with consolidated reports; for easy accurate comprehensive view for all customers and vendors balances, in addition, to detailed transactions with full analysis of your customers' and supplier's activities such as aging, periodic collections and maximum credit reports.





MULTI-LEVEL FILE STRUCTURE

Providing grouping on any set of files, whether general ledger accounts, A/R, A/P, assets or cost centers to simplify data entry and provide flexible comprehensive reporting options.

PENDING INVENTORY HANDLING & REPORTING

User-defined properties when extracting the financial reports for valuation handling, reporting pending inventory in store issues and store receipt vouchers.

VAT SETTLEMENT & INVOICE BANK

Multi-level VAT rate definition that is fully integrated with vouchers; giving a fully automated calculation and management for taxable transactions and providing full reporting and VAT settlement processing, including detailed invoice bank report.

IMPORT & ITEM COST ALLOCATION MANAGEMENT

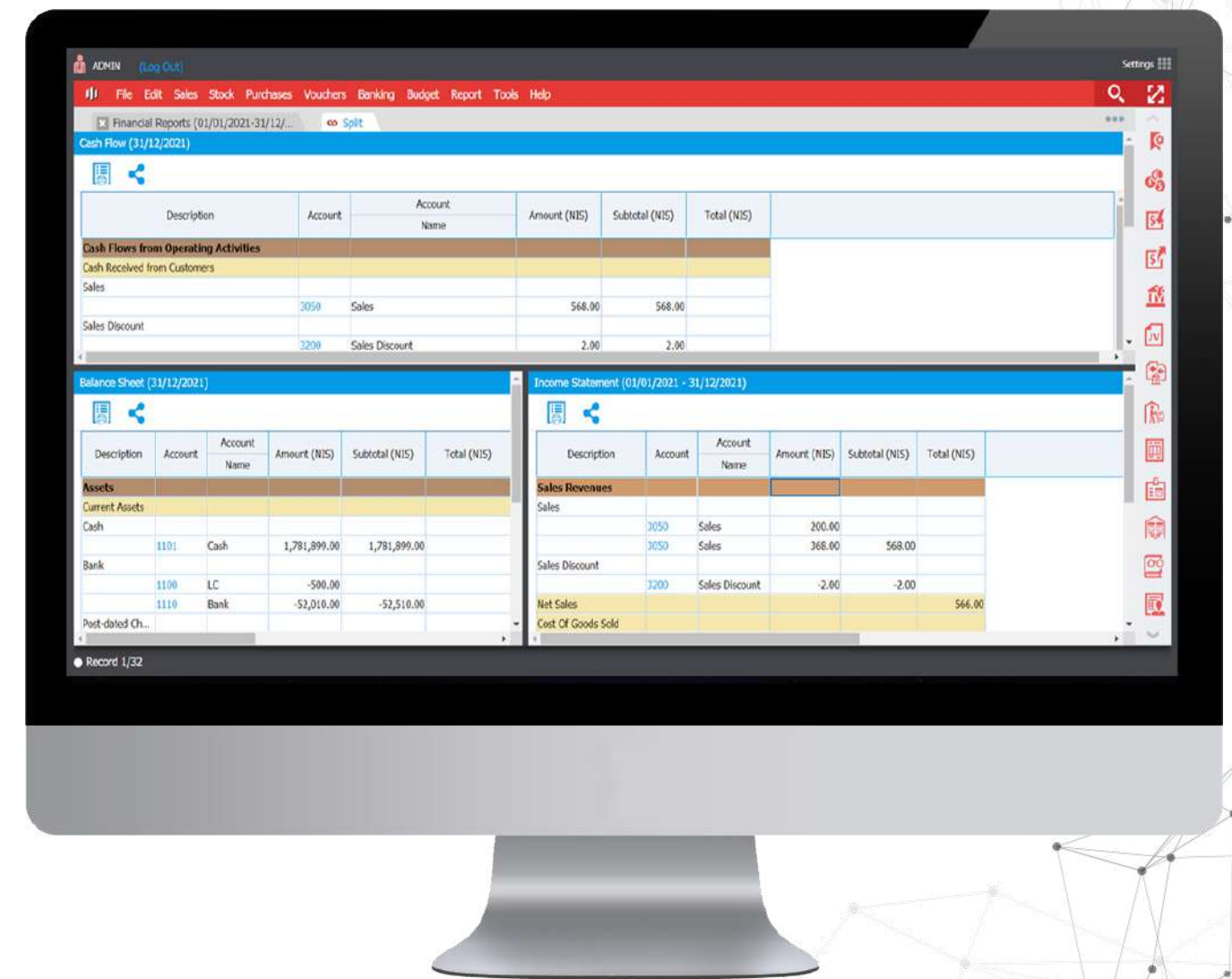
For accurate item cost calculation and evaluation, the system provides a tool for financial management, tracking, reporting and allocation of additional costs per shipment. Especially for imports where each additional cost such as transportation, tariffs, storage, bonds...etc. can be allocated to different items in the shipment, by a predefined set of criteria or by direct allocation per item.

FINANCIAL STATEMENTS

Comprehensive financial reports for any period of time including (DD-MM-YY TO DD-MM-YY), giving flexibility for cross period and multiyear reporting, in addition, to providing currency translation for extracting the reports in any desired currency defined in the system.

FULL BANKING & CHECKS MANAGEMENT

Management for multiple bank accounts and multiple currencies, full management and tracking for received and issued checks and bank transfers with full details, including due dates and endorsed checks. This provides an easy automated bank reconciliation process, a cash flow forecast for each bank account and the capability to track the full check cycle from when it is written till it is cashed or canceled.





CHECK PRINTING & BANK TRANSFER FORMS

Fully user-defined ease-to-use setup per bank account for checks dimensions and available fields for any available check format; in addition, to user-defined HTML bank transfer forms.

AUTOMATIC DEPRECIATION CALCULATIONS

Fully integrated with financial reports; providing detailed depreciation schedules per asset or group of assets at any period of time, facilitating management of assets, new additions and discarding. In addition, to providing detailed managerial reports for assets related expenses.

MULTIPLE SEGMENTS/COST CENTERS

Featuring an unlimited number of account segments of any size, with sub ledgers giving you the flexibility of tracking transactions to the smallest detail. Clients could tailor segmented accounts to cope with management requirements, was it per department, project, cost center, currency or other.

PREPAID & ACCRUED EXPENSES

For accurate financial and managerial reporting Bisan ERP provides automated calculation and management for accrued and prepaid expenses with an easy-to-use user-defined setup.



MULTI-CURRENCY MANAGEMENT

Full multi-currency management with user-defined currencies and currency rates tracking; providing the ability to use multiple currencies per voucher, with automated currency conversion and currency variance calculations vouchers. This allows the management of as many currencies as needed, keeping track of account balances, customer statements and financial reports in the standard currency, as well as any other defined currency. Moreover, the system provides multi-currency reporting and value translation for all available reports.



SALES & MARKETING MANAGEMENT

CUSTOMERS

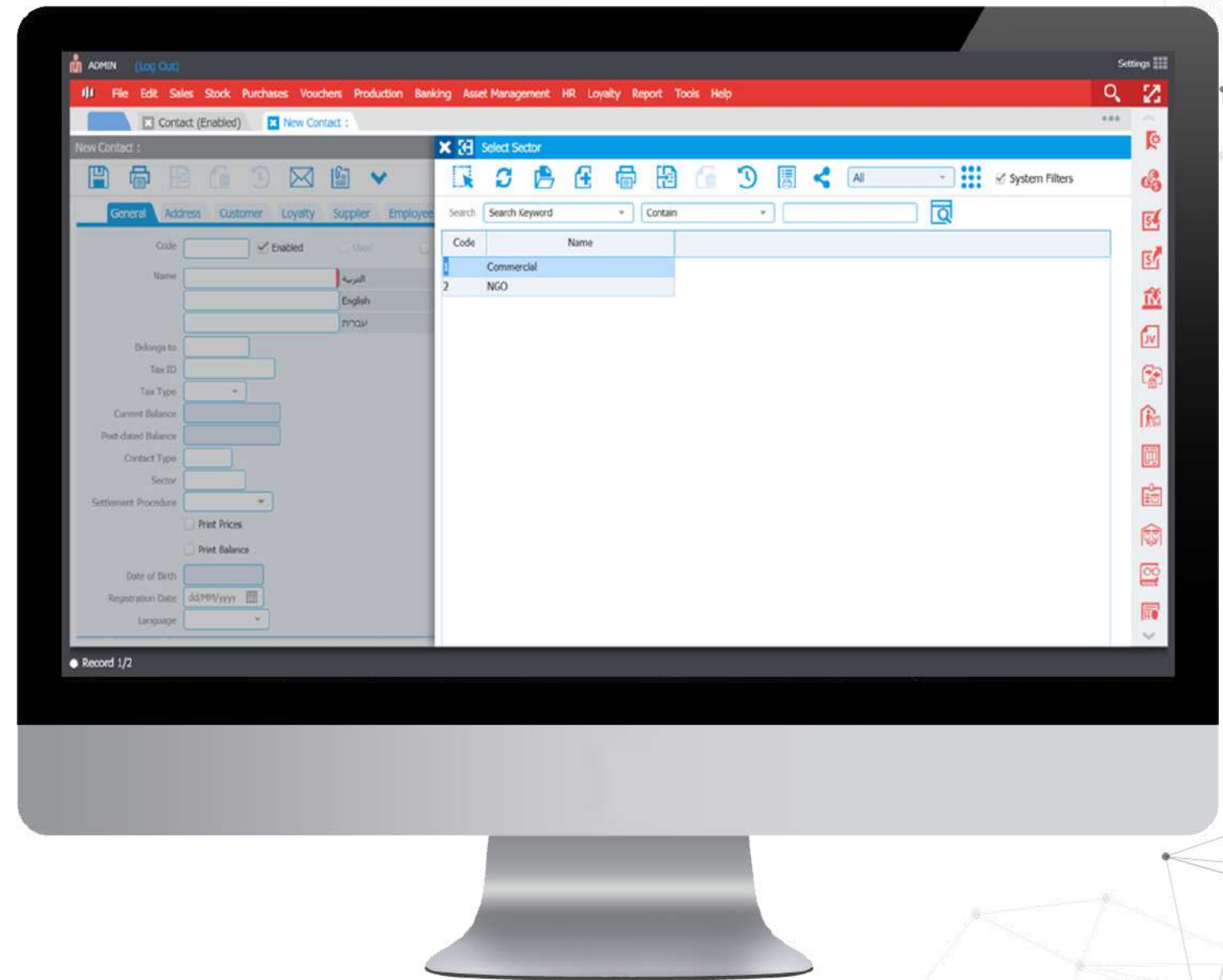
The system provides a mini-CRM system with full customer information, in addition to multi-level grouping file structure for tracking and roll up reporting to parent company level.

CUSTOMER SEGMENTATION

The system provides segments for categorizing customers, to help extract data for sector types or any required grouping desired for managerial reporting and market analysis.

PROFORMA INVOICES

Price quotation sent to customers keeping track of historical data and automatically integrated with the sales process vouchers.



SALES VOUCHER INTEGRATION

Full integration and workflow between all sales vouchers and proforma invoices, sales orders, store issue vouchers and invoices. This simplifies processing, tracking quantities and prices from one document to another, including partial quantities; eliminating double data entry and providing full traceability per item for accurate processing and control.

PRICE MANAGEMENT

Multiple price lists with multiple currencies where each customer or group of customers is assigned a price list. With a multi-level file structure, the system provides the flexibility to update all related price lists in one entry, as well as the option to automatically update the defined prices for each customer once a new sales invoice, manual invoice or sales order is posted. In addition, to special deals and agreements management; where each customer could be assigned a special price list with a validity date per item.

SALES FORCE MANAGEMENT

Full management and tracking for salespersons per sales document; providing full sales analysis and reporting, in addition, to commission calculations based on sales and collection.



ANALYTICAL SALES REPORTS

Comprehensive analytical reporting for quantities and values provided in multi-currencies, for cross period, periodic, comparative reports per periods, sectors, item groups, categories and areas; with detailed reports including profit per item or customer at any period.



The desktop monitor displays the 'AR/AP Settlement' screen. The top section shows a form with fields for 'Contract', 'Currency', 'From Date', 'To Date', 'Account', 'Branch', and 'Settle'. Below the form is a table with columns: Date, Document, Account, Balance, Sub Account, Original Balance, Amount, Date, Document, Balance, Sub Account, Original Balance. The table contains 8 rows of data representing transactions.

Date	Document	Account	Balance	Sub Account	Original Balance	Amount	Date	Document	Balance	Sub Account	Original Balance
31/12/2018	10/0000002 JOURNAL	1300	1,010.00		3,500.00/00						
25/04/2019	10/0000013 INVOICE	1300	696.00/00		466.00/00						
22/05/2019	10/0000011 INVOICE	1300	243,600.00/00		243,600.00/00						
23/05/2019	10/0000023 INVOICE	1300	10,000,000.00/00		10,000,000.00/00						
29/05/2019	10/0000014 INVOICE	1300	19,601.00/00		19,601.00/00						
29/05/2019	10/0000015 INVOICE	1300	7,059.00/00		7,059.00/00						
01/06/2019	10/0000016 INVOICE	1300	58.00/00		58.00/00						
01/06/2019	10/0000017 INVOICE	1300	2,000.00/00		2,000.00/00						

INVOICE SETTLEMENT

To facilitate accurate collection and evaluation the system provides different invoice settlement options.

PURCHASES, INVENTORY & WAREHOUSE MANAGEMENT

PURCHASE CYCLE WORKFLOW

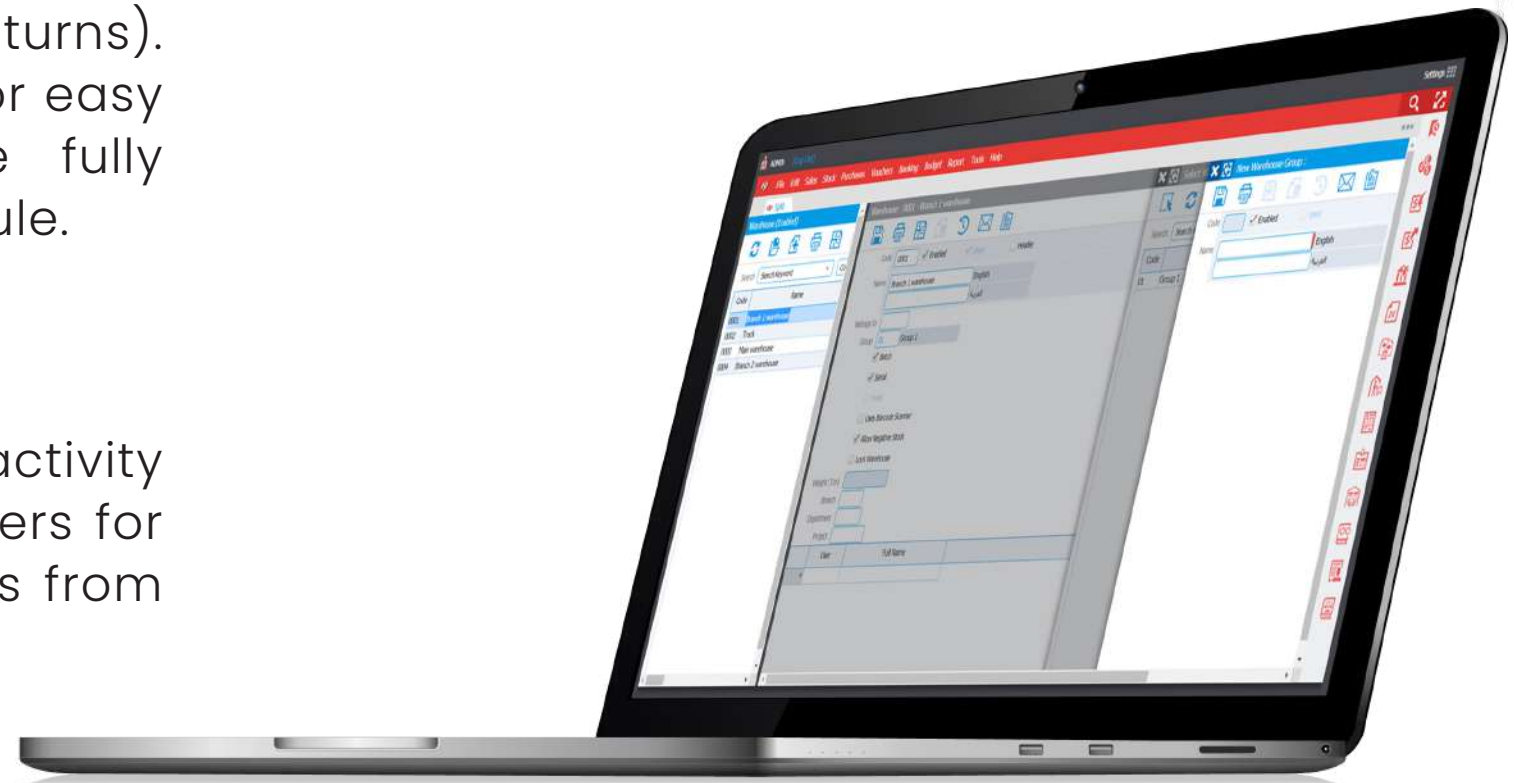
Full set of purchase vouchers (purchase orders, store receipts, purchase invoices and purchase returns). Vouchers in the workflow are linked together for easy tracking and control. All transactions are fully integrated with the GL and the budgeting module.

SUPPLIERS

Suppliers could be grouped based on type of activity and sector. Items could be assigned to suppliers for ease of control and for comparing item prices from different suppliers.

MULTIPLE WAREHOUSE MANAGEMENT

The system allows an unlimited number of warehouses to be defined, with grouping options for multi branch inventory management and evaluation.



INVENTORY & LOCATION MANAGEMENT

The system provides the ability to assign a bin number or location per warehouse for each item with maximum, minimum and reorder quantities to facilitate locating items, managing available quantities per shelf and ease of the inventory taking process.

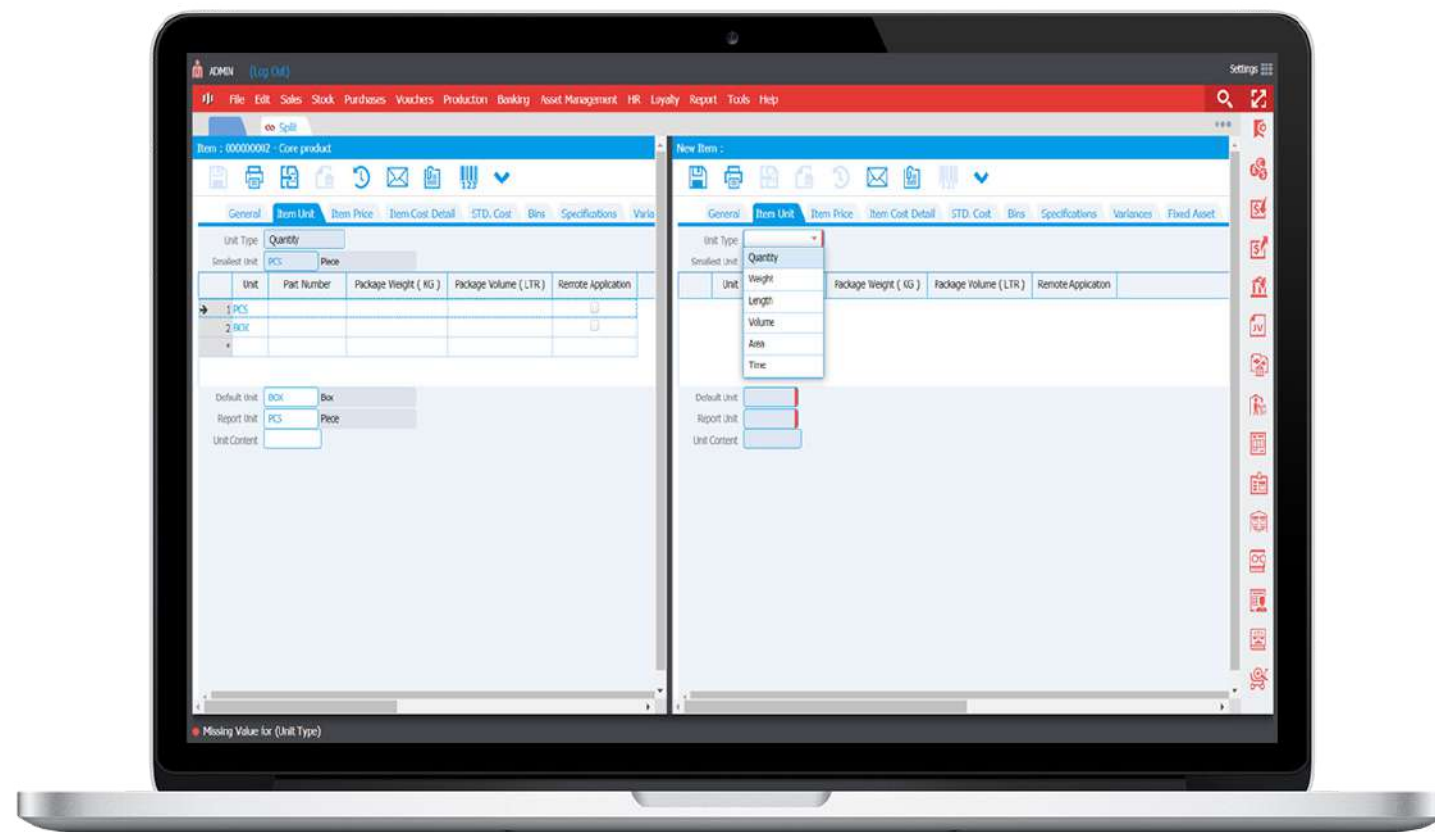


ENDING INVENTORY EVALUATION

Automated real time First In, First Out (FIFO), by serial number, standard or fixed ending inventory evaluation by item at any desired time; taking into account branches and warehouse grouping.

MULTIPLE UNIT TRACKING PER ITEM

An innovative approach for multiple unit management for items. Each defined item could have more than one unit of measurement with automatic conversion; simplifying data entry transactions and providing comprehensive reporting capabilities per any desired item unit.



COUNT & WEIGHT ITEM MANAGEMENT

Full count and weight management where an item is sold or purchased by unit of count, package or case, while priced by weight where actual weight per unit varies. This provides easy inventory sales and purchase processing, while maintaining a high level of sales and inventory control.

HEIGHT, WIDTH & LENGTH ITEM MANAGEMENT

Full management for items sold by area or volume with unlimited dimension options for the same item such as glass, stone and marble, where the item is sold by count in different dimensions while priced by area or volume, this option provides the ultimate management tool for such items by tracking only one item unit for data processing and providing summary reports by area or volume and comprehensive reports with infinite combinations of different dimensions per item.

PURCHASES REPORTS

Comprehensive analytical reporting for quantities and values; providing deep data with multi-currency, cross-period, periodic and comparative reports per periods, areas per item or supplier.

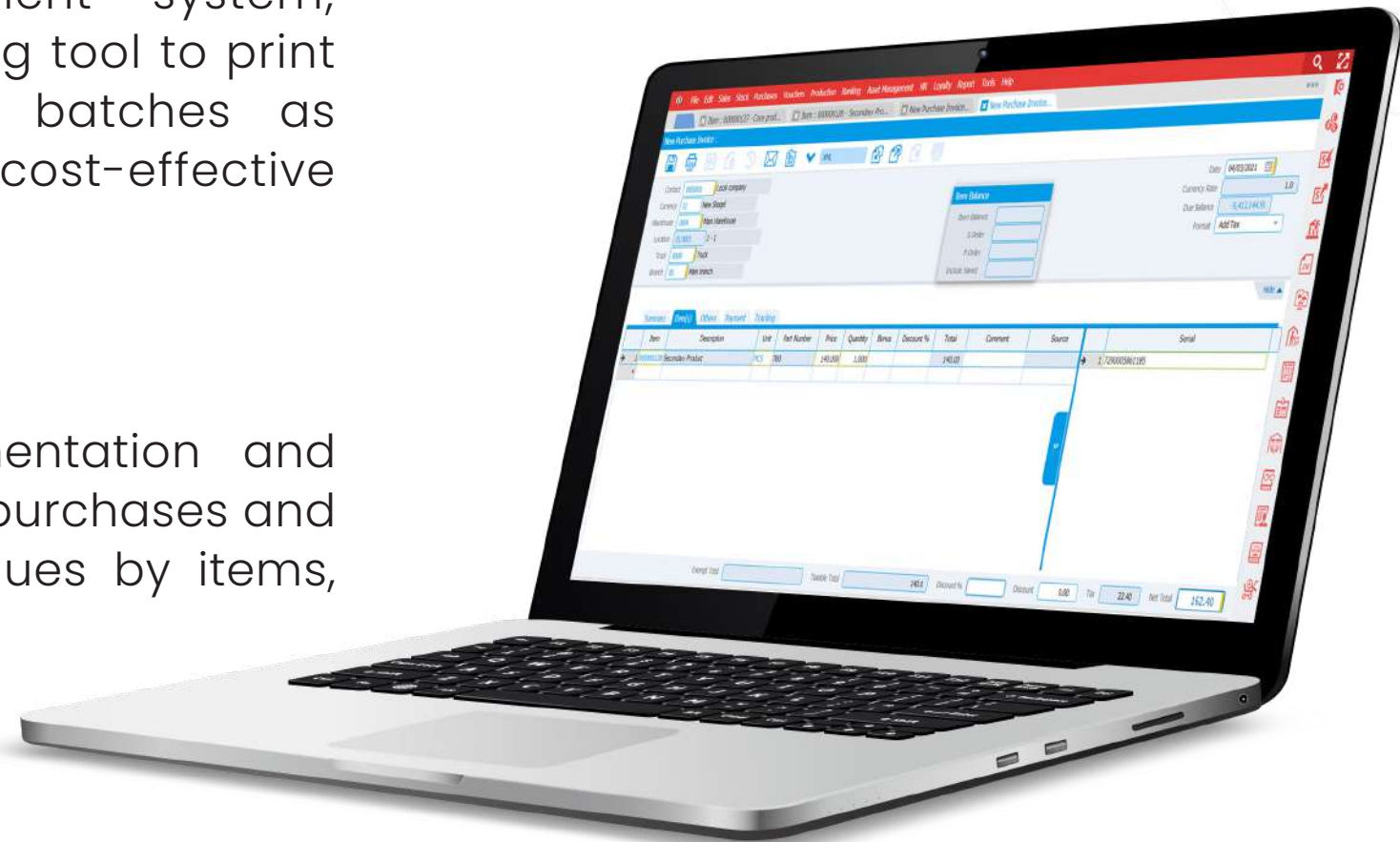


BARCODE MANAGEMENT

Ability to assign part numbers and barcodes per item unit for an enhanced inventory management system; providing an easy user-defined label printing tool to print item part numbers, serial numbers or batches as barcodes. This feature is a practical cost-effective solution.

ITEM SEGMENTATION & REPORTING

The system provides a multi-level segmentation and grouping per item providing comprehensive purchases and managerial reporting by quantities and values by items, brands, categories, classifications...etc.



SERIAL NUMBER, BATCH LOT & EXPIRY DATE TRACKING

Tracking of each item with the specific serial number or batch (shelf-life expiry dates) for enhancing the management of items under warranty, recalling items or track expiry dates for perishable items; includes a complete set of reports. Keep track of each item according to your preferences and procedure using fully customizable alerts and notifications in the system.

BISAN ERP MODULES



FINANCIAL BUDGET

The Financial Budget module is seamlessly integrated with the GL, the purchasing vouchers and other modules providing real time reporting and budget control.

- **Multi-year & Period Budgets:** The system allows setting up multiple year budgets with transaction and control across fiscal years. The system allows creating multiple budgets per period for control purposes and reporting.
- **Flexible Structure:** Flexible budget structure based on any combination of defined segments.
- **Budget Vouchers:** Budget setup transactions are entered through special budget vouchers, keeping track of all additions, amendments and variations on any budget.
- **Flexible Dates & Controls:** A flexible time span for each budget created; allowing budgets to be allocated per year, quarter, month, or a range of days; including non-consistent time intervals within the same budget. Moreover, budgets could be defined as, controlled budgets not allowing users to exceed set amounts or uncontrolled budgets used for reporting purposes.
- **Reporting:** Various numbers of reports, including: roll up accounts and segments, budgeted vs. actual expenditure, budget period matrix for expenses and revenues for every segment and every year.



SALES BUDGET

The Sales Budget module is seamlessly integrated with the sales vouchers providing real time reporting and targets monitoring.

- **Flexible Structure:** Flexible sales budget structure based on any combination of defined segments, item categories, customer groups, areas or sales persons. Sales budgets could be configured per quantities and/or sales amounts.
- **Multi-year & Period Budgets:** The system allows setting up multiple year sales budgets with transactions and monitoring across fiscal years. Furthermore, the system allows creating multiple sales budgets with different configuration setup per period for reporting.
- **Budget Vouchers:** Sales budget setup transactions are entered through special budget vouchers, keeping track of all additions, amendments and variations on any sales budget.
- **Flexible Dates:** A flexible time span for each budget created; allowing budgets to be allocated per year, quarter, month, or a range of days; including non-consistent time intervals within the same budget.
- **Reporting:** Various reports, including; roll up sales & segments, budgeted vs actual sales.

BRANCH MANAGEMENT



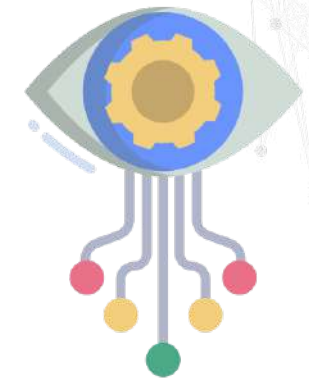
The system allows an unlimited number of branches to be defined in the system, with grouping options for branch management and financial reporting.

LARGE DEALERSHIP



A module to manage sales between PS/IL for large corporations as classified with the Tax Authorities, including an electronic file that is submitted to the Tax Authorities.

WORKFLOW & ELECTRONIC TRANSACTION APPROVAL



To save time and ensure accuracy, the system offers a multi-level electronic approval structure per document. Thus, providing a paperless, fully tracked, automated and audited transaction processing based on your own set policies and procedures.



FIXED ASSETS MANAGEMENT



The Fixed Assets Management module is designed to manage the entire life-cycle of fixed assets, including: purchase of assets, asset location and custody, asset count, expired assets, assets retirement and sale of assets. It includes multiple asset accounts, multiple depreciation accounts, and multiple depreciation expense accounts. Assets are grouped by type, category, classification or others. The module is fully integrated with items and warehouse management. It provides automatic calculation and posting of depreciation expenses which could be set periodically and provides full fixed assets disposal management; in addition to detailed reporting.

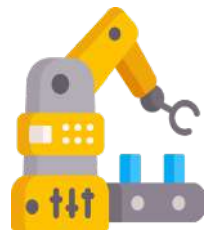
Asset Purchase: Managed by conventional purchase vouchers eliminating double data entry and errors. Each fixed asset entered is automatically assigned a unique asset tag “serial number,” in addition to the supplier serial number (if available), the asset tag could be printed as a barcode label directly from the system and attached to the asset.

Locations: Flexible user-defined location structure that could track multiple geographic areas and buildings down to the room level.

Custody Management: In addition, to asset tracking by location, assets could be managed by custody. Asset movement from location and/or custody are managed by serially numbered vouchers, keeping historical movements that could be easily tracked and audited at any point of time. User-friendly tools for automatic loading and bulk movement of assets from one location to another or to multiple locations

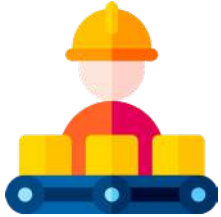
Fixed Assets Count: Special count vouchers with user-defined settings based on location or building are defined for asset count. Count vouchers are serially numbered keeping track of historical transactions. Data entry is flexible to use barcode scanners by scanning either the asset tags or the supplier’s serial numbers. Reporting contains assets per location, in addition, to comparing assets per location with counted assets.

Asset Disposal Management: Management of sold, donated, lost or used as spare parts of fixed assets with full related financial transactions.



PRODUCTION MANAGEMENT

Flexible to support multiple production theoretical formulas, to report variances on standard and actual raw material and direct labor used in production, besides, automatic allocation of direct and indirect production costs and expenses; giving accurate calculation of cost per produced unit.



Production Lines: Multiple production lines can be defined for better planning of resources and more accurate direct and indirect cost allocation.

Employees Groups: For easier planning and labor cost allocation, multiple labor groups can be defined where employees are assigned to different groups based on the type of labor required in production.

Theoretical (Standard) Production Formulas: Multiple theoretical production formulas can be defined using the units and quantities of: finished products, raw materials, hours of labor per employees' groups and percentages of allocated direct cost.

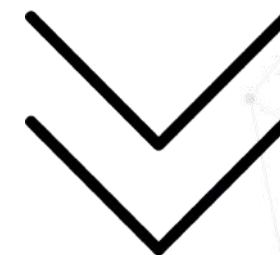
Bill of Materials: Raw materials needed for producing the required quantity of finished goods are calculated based on theoretical production formulas defined.

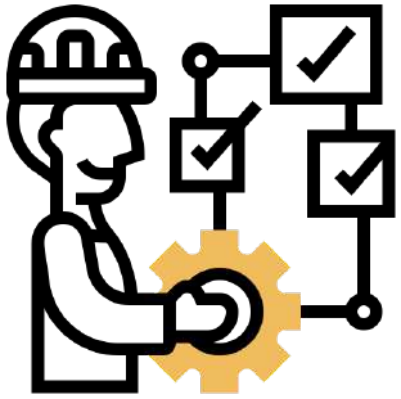


Production Vouchers: Actual quantities of finished products produced, actual quantities of raw material and labor hours per employee used in production.

Variance Calculations: Detailed reports comparing both quantities and cost of raw material and labor hours as per theoretical formulas with actual raw material and labor hours consumed for actual finished products produced during any period.

Warehouse Integration: Production vouchers are fully integrated with warehouse and stock cards including production floor and warehouse management.





Raw Material Variance Controls: User-defined variance percent allowed per raw material line item used in production formula, controlling mistakes in actual quantities of raw materials used in production and data entry errors.

Direct Cost Allocation: The production module is fully integrated with the general ledger where all transactions on accounts defined as direct cost in the production formulas are allocated to production costing based on points and percentages as defined in the production formulas.

Indirect Cost Allocation: All transactions on accounts defined in the GL as indirect expenses are allocated to production costing as a percent of direct material or direct labor as defined in the production formulas.



Finished Goods Costing: Automatic calculation of cost per unit produced by allocating actual raw materials used, direct labor (employees actual hours used), and actual direct & indirect costs in the period.

Comprehensive Reports: Produced quantities, raw material and labor required, actual raw material and labor consumed, quantities and cost variance calculations and finished goods costing per unit.

CAMPAIGNS & LOYALTY



Two configurable modules in one, a Campaigns module or a Loyalty module, in which campaigns manage sales campaigns and offers, as well as, customer's points and balances.

- Loyalty is points based module for customers for purchases depending on loyalty scheme defined.
- Point redemption formula may be defined to be consumed as a payment option for products/services.
- Loyalty and Campaign invoices may be customized to add and show loyalty points balances for each contact, item, group, classification, category etc.
- Advanced filters to allow/deny contacts or invoices.
- Loyalty reports include points aging, items sold on points, redemption amounts, points balance details and points per campaigns.
- Campaigns can all be entered in the generic format (buy 2 get 1 free) versus the range format (first ten or last ten).
- Both campaigns may be assigned by quantity or by invoice amount.
- Each campaign may be assigned to a certain department, branch, area or currency.
- Campaigns can be set to run in specific days and hours.
- Campaigns may be assigned for a selected few of the contacts and users can create membership groups.
- Campaigns reports include: campaign performance, bonus items per campaign and profit per campaign.



PAYROLL & ATTENDANCE



The Payroll and Attendance module fully supports multiple countries Payroll Deduction Regulations, income tax and other local tax regulations. It is flexible to support different methods and formulas for calculating payroll, allowances and deductions. A payroll form can be created to take into account calculation method, payment period, payment type and the design of printout pay slip for each group of employees. The system allows the user to create and print payroll slips for each employee, and offers easy and flexible treatment of employee advances and loans. Additionally, the system can deal with attendance transactions either by import from the attendance clock or through manual entry.



Employee File: Full name, employment type, ID number, address, city, phone, fax, mobile, email, job title, education, gender, bank account, marital status, number of children, card number, general notes and employees' start dates and end dates.

Payroll Calculations Variables: User-defined infinite number of variables that will be used in setting different payroll calculation formulas. This approach provides a flexible powerful tool similar to building formulas in spreadsheets.

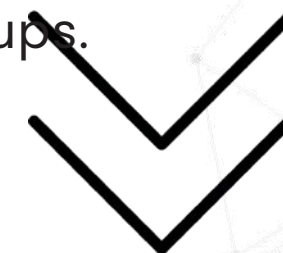
Salaries Calculations: The system provides different methods for salaries calculations, hourly rates, over time and attendance hours, multiple shifts and fixed periodic salaries (daily, weekly, bi-weekly, monthly, quarterly, semi-annually and annually).

Deductions & Allowances: User-defined calculation methods for deductions and additions to salaries. The system is ready for implementing the SSC announced instructions and regulations.

Salaries Yearly Increases Percent or Scale: Multiple methods for defining yearly salary increases per employee groups or individual employees as a fixed percent rate or based on defined scales, such as; a combination of grade and step matrix.

Payroll Tax Forms: An automatically generated ready to submit detailed payroll tax form as required by the PNA tax authorities and complying with updated tax laws.

Pay Slips: Fully customizable pay-slips to include any information available in the employee file and any variable or calculation in the payroll. Different pay slips formats and information fields could be defined based on employee groups and sub groups.





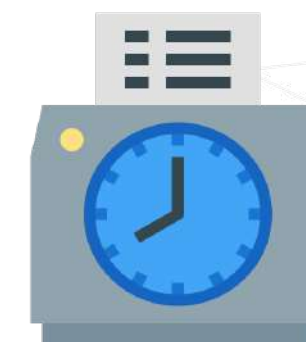
Employee Group: The system allows assigning employees to different groups for time saving and easy setup.

Working Schedule: Flexible planned working schedule per employee group including start and end time, breaks, handling of extra and shortage time from schedule. In addition to the option of including the break within or subtracting it from the regular working hours. The working schedule is built in an easy logical flow with the ability of assigning the whole year in a weekly format or handling specific calendar days. The system provides the option of adding a rule where OUT actions are auto recorded in case there is an unclosed day.

Attendance Rules: Multiple set of rules for handling attendance calculations such as maximum and minimum daily working hours, margins for early and late IN minutes, margins for early and late OUT minutes

Vacations Schedule: Setting employees vacations and providing detailed reports per employee in addition to vacation balance calculations.

Absence Types: Defining an unlimited number of absence types such as delays/early leaves, annual vacation, holidays, closures, illness, maternity...etc. with tracking and reporting on each type. The system enables different ways of dealing with attendance delays/early departures such as reduction from vacation balance, deduction from salary...etc.



HUMAN RESOURCES MANAGEMENT & HR PORTAL



A full HR management module that includes the organization structure, employee profile, absence management, and performance evaluation in addition to a self-service portal. This module fully integrates with and completes the Payroll & Attendance module. The HR administrator is responsible for setting up the employee profiles and information whereby each employee may access the module and perform needed actions through a portal or directly through the system.

Organization Structure: A submodule to identify how the company is organized, what divisions it has, what departments these divisions contain, and what are the defined positions in these departments. Divisions may be distributed horizontally (the common case) across the organization hierarchy or through a vertical alignment. The divisions and departments entities provide flexibility to allow room for any future organization restructuring.

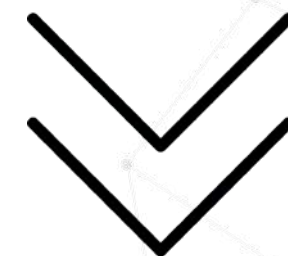
Salary Range: A salary range may be added to positions. Thus, providing more control, where each employee is directly assigned a position. The HR administrator may define groups and link employees to these groups depending on the organization's needs. The main defined entities in this module are: division, department, position, employee, position history, group and branch.

Employee Profile: A profile that captures all the needed data of the employees, including basic information, dependents list, personnel, insurance, education, certificates, previous work experience, in-house experience, acquired training, and bank accounts information. Salary information, history, allowances and deductions are also defined. Once a profile is deactivated, it can be reactivated in case of re-employment.



Absence Management: A submodule for leave management, for vacations, holidays, and other leaves such as annual, sick, educational, training, breastfeeding, and others as defined per the organization's policies. The organization can set its own rules to check the eligibility and scope of the vacation, as well as, designing a workflow for approvals for certain leaves, thus enabling email notification for vacation requests.

Employees may access the self-service portal to apply for leaves and to check their yearly vacation balance, as well as, leave approvals or rejections.





Performance Evaluation: This module manages the performance evaluation across the organization as a whole, it can be triggered to start or to end at any time in the year whenever the organization sees it is suitable for its business operations.

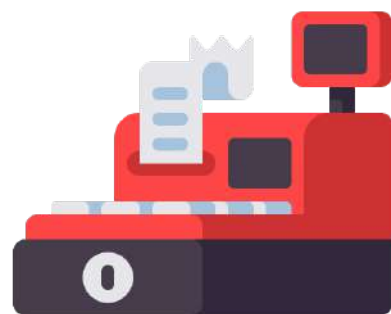
The performance evaluation is based on creating evaluation templates for each division or department or group or specific position based on the organization's needs. Defined parameters and KPIs are set for calculating evaluation range and statuses and may be linked to salary raises for the next payroll cycle.

Achievements can be documented under three types; reward, recognition or promotion. Also, notices can be recorded in the employee file as a notice or warning. Managers may view all evaluations and their status for pending and completed ones through the self-service portal and may be edited until they are finally approved by the designated approver.

Recruitment: the system provides a complete solution for the recruitment process. Once a vacancy position is defined and the recruitment stages are set, the user can track each applicant's progress and the status of each vacancy in a very robust manner, until reaching the conclusion of either deactivating the application or recruiting the applicant which creates a comprehensive new employee file.



Self-service HR Portal: In order to have a functional HR module; an employee portal is essentially needed. The portal enables the employees to view their information, and execute certain actions such as apply for a vacation, approve employee-related requests, and fill the performance evaluation form. It is a stand-alone product with a simple web interface that connects directly to the HR module and Bisan ERP.



ONLINE/OFFLINE POINT OF SALE (POS)

A user-friendly Point of Sale module for retail and cash sales, easy-to-use setup and management. It is seamlessly fully integrated with the Bisan ERP Trade and Industry Professional Edition utilizing all back-office system features, reporting and modules.



- Online real time integration with back office with internet connection.
- Works offline when connection is lost.
- Supports multiple POS stations.
- Supports multiple price lists and station and customer price list definition.
- Supports touch screens with catalog view and item grouping.
- Supports campaigns offers and schemes by showing a list of all active campaigns for the designated period.
- Quick access to define fast moving items.
- One function key for printing POS invoices on slip printers, open cash drawer and post transactions.
- Easy search and item lookup.
- Cash and on account sales.
- Supports to and from money transfers.
- Full integration with peripherals: slip printers, cash drawer, barcode scanners and scales barcodes.
- Direct impact on inventory with sales transactions.
- Full set of related sales and collection reports including comparative hourly sales.
- Item barcode scanning.
- Supports multi-currency customer payments and change amounts.
- Multi-currency item price lists.
- Real time integration with warehouse and inventory management.
- Supports defining a different warehouse for each POS.
- Supports defining a specific price list for each POS.
- Access rights for each POS to define available item groups.
- Supports adding order variations to items on POS invoice/receipt.
- Supports adding delivery charges and delivery instructions.
- Supports holding invoices when holding items for customers.
- Shifts start/end with summary report of cash at shift end.
- Handles sales returns.
- User-friendly interface for adding customers and contact information for gathering a customers' database.

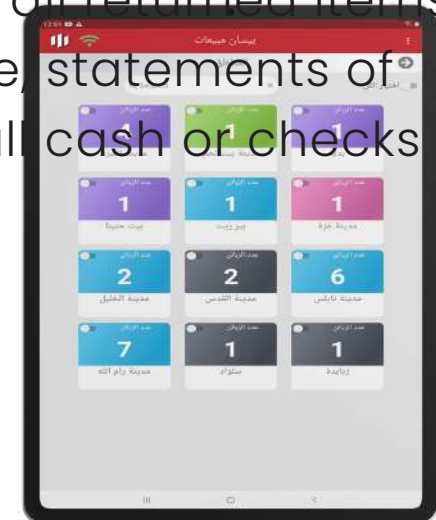


MOBILE SALES APPLICATION WITH CATALOG VIEW

A mobile sales application that is fully integrated with Bisan ERP Trade & Industry providing a flexible and cost effective solution for automation and management of the sales force in the field. It allows distributors and suppliers to collect sales orders, sales returns and collections. The module is set up on an Android tablet or smartphone, and can be connected to a receipt slip printer.

- A complete ordering and van sales module, with an automatic check for items actually loaded on trucks and semi-automated van refill capabilities.
- Real time tracking for sales orders, invoices, collections and inventory with prefix sequence of documents for each salesman.
- Catalog view to organize items in groups and ease the ordering process.
- Attach images for item groups, classification, brands and categories.
- **Apply campaigns and offer loyalty discounts for customers.**
- **User friendly and easy-to-use with three different views and the ability to increase the size of the item picture.**
- Barcode scanning through the camera of the tablet or mobile for placing orders.
- Works both online and offline if the salesman is out of network connectivity to resume work without interruption. Once the connection is re-established all data is sent to Bisan ERP automatically.
- Ability to enter a comment per line item and all comments appear in Bisan ERP.

- Bluetooth connection to printers for printing sales orders, sales returns with return reason, receipt vouchers, manual receipts and statements of account.
- Supports automatic synchronization by hiding out-of-stock items in warehouse for sale orders.
- Ability to edit sales orders on Bisan ERP.
- Each mobile application user preference is defined in Bisan ERP for setting the user language.
- Multi-currency and check receipt vouchers are given automatic serial numbers in Bisan ERP once they are printed in the mobile application.
- All issued invoices for cash or credit sales allow for bonuses and discounts and are fully integrated with inventory in Bisan ERP.
- Giving a discount and/or bonus on sales invoices, which automatically is reflected in Bisan ERP's inventory.
- All mobile application vouchers such as invoices, orders and receipts are automatically posted to Bisan ERP and are reflected on the accounts directly as soon as they are printed in the mobile application.
- Reporting showing activity logs for all sent vouchers, saved vouchers, inventory balances, vouchers inputted while users were working offline and have not been transferred to Bisan ERP yet, a detailed report of all returned items during a specific time frame, statements of accounts and a report for all cash or checks collected per user.





LEASING

The Leasing module is tailored and designed to be utilized for the functions of the automotive industry for contractual car leasing.

- Additional information is added to the contact file to include monthly payment, bank account details, employer and length of employment.
- Information about vehicle, vin number, color of vehicle, type, year of production, mileage, used or new, firsthand or second hand and car registration date.
- Defining two types of contracts: lease to buy, or lease with the option to buy at the end of the contract period.
- Full contract information is defined to specify the purchase currency and price, commission approval date, date, and amount of first payment, the insurance, guarantor, registration, maintenance, add-on fees, down payment, acquisition payment and any loan information taken for the purpose of leasing.
- An option to spread out the payment installments periodically: monthly, bi-monthly, quarterly, semi-annually and annually.
- Two types of revenue calculations by defining percentages based on purchase amount or loan amount.
- Defined security access rights to allow users to change payment amounts or dates.
- Calculation is based on XIRR-format used for unearned revenue calculation and principal amount.
- Ability to create leasing groups for issuing one invoice for multiple cars leasing.
- Amortization calculations and payment totals reporting.
- Ability to settle contracts for early closing.
- Defining printing templates for leasing contracts, purchase invoices, registration and application forms.
- Full reporting for pending payments, pending revenues and lease aging.



FUEL STATION MANAGEMENT

Fuel Station operations require customized features. This module offers a real time solution that includes meters management, cash and coupon sales, as well as, periodic invoicing for full control of items:

- Meter management.
- Shift management.
- Cash sale management.
- Coupon and non-cash sale.
- Periodic invoicing for non-cash sales.
- Special reporting for station, meter, shift and item.



MANAGEMENT OF CRUSHERS & READY-MIX PROJECTS

The Crushers & Ready-mix Industry requires a special delivery note as per the nature of the operation. Weight calculations are specific and accounted for, along with extensive reporting:

- Customized delivery format.
- Truck and driver delivery costing per location/ quantity/ type of item.
- Ready-mix specification such as flow and greatest measurement.
- Printing delivery in special format per industry (ready-mix, crushers or other).
- Integration with electronic scales.
- Net weight calculation based on each truck weight.
- Periodic invoicing for each project.
- Special reporting.



CAR RENTAL

For car rental operations, special forms and an agreement are generated from within the system, as well as, extensive reporting for the rented and available cars:

- Full management for car rental operations.
- Customized form for car rental agreement.
- Customized printing for car rental agreement.
- Extension agreements.
- Car damage value.
- Available cars on item lookup.
- Send agreements to invoices.



SERVICE CENTER

A module that manages the required service center activities in the maintenance and repair industry:

- Creates installation work order to install sold equipment.
- Work order ticket for maintenance request.
- A detailed report for the employee's time spent and inventory items consumed for repair and maintenance.
- Track spare parts and accessories used in maintenance.
- Tracking actions to detect work order status.
- Integration with inventory management and invoicing.
- Service contract management for warranty, lease and maintenance.
- Group action to extend or deactivate contracts.
- Preventive visits schedules and reports.
- Management of metered devices maintenance.
- Billing could be set upon meter minimum quantity and/ or minimum period.

CYBERSECURITY & ACCESS RIGHTS





ACCESS RIGHTS SECURITY

Users are organized in a tree fashion similar to that of the company's administrative tree, each user can be assigned specific access rights on any option, module and functionality in the system.



THIRD PARTY LOGIN OPTIONS

A feature that allows users to incorporate verified third-party applications as a login option to the ERP system.



PASSWORD SECURITY

Controls for assigning password strength and requests to change it periodically.



TWO-FACTOR AUTHENTICATION

A two-factor authentication for additional optional security that sends an SMS to the mobile number defined in the user's file. Users should enter the code sent in SMS to verify login and it can be defined to verify every login or only when trying to log in from new stations.



LOGIN SCHEDULE

Definable time schedules to permit users to log in to the system at specific schedules or times.





ADVANCED SECURITY

Permitting authorized users' access in permissible fields, sub-fields by defining criteria and rules per voucher or record field providing a high level of user access control.



STATION LOGIN SECURITY

In addition to usernames and passwords, a security option is defined for permitting specific stations to access the system.



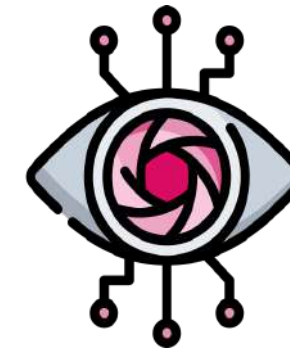
DOCUMENT PRINTING

User-defined document printing options allowing or denying access to print and post vouchers.



CONTROL DATES

User-defined set of controls for data entry security and control, such as: maximum and minimum allowed document dates from system date; per bank account lock date for reconciled bank statements; data entries lock date for last audited or reporting period. These controls guarantee unintentional data entry that will affect audited or submitted reports.



ELECTRONIC SIGNATURES

Assigning required signatures for approvals per voucher based on criteria and rules for fields such as voucher amount, branch, department and/or supplier.

A GLIMPSE AT OUR PARTNERS



PRO VS. LITE COMPARISON

	PRO	LITE		PRO	vs.	LITE
Cloud ERP	✓	✓	Customized Views	✓	—	
User-friendly	✓	✓	Email Integration	✓	—	
Truly Multilingual System	✓	✓	SMS Integration	✓	—	
Single Point of Entry	✓	✓	Multiple Users Definition	✓	—	
Fully Integrated Modules	✓	✓	User Preference	✓	—	
Contact Language Preference	✓	✓	Login Schedule	✓	—	
Drill Down Functionality	✓	✓	Electronic Signature Setup	✓	—	
Filtering Capabilities	✓	✓	Document Printing	✓	—	
Reports Export	✓	✓	Advanced Security	✓	—	
Record Cloning	✓	✓	Bank Transfer Forms	✓	—	
Macro Recorder	✓	✓	Advanced Search Functionality	✓	—	
Multiple Year Reporting	✓	✓	Data & Report Import	✓	—	
Split Views	✓	✓	Full Audit Trail	✓	—	
Access Rights Security	✓	✓	Multiple Segments/Cost Centers	✓	—	
Station Login Security	✓	✓	Multi-level File Structure	✓	—	
Password Security	✓	✓	Prepaid & Accrued Expenses	✓	—	
Control Dates	✓	✓	Customer Segmentation	✓	—	
Barcode Reading & Printing	✓	✓	Price Management	✓	—	
Checks Reading	✓	✓	Multiple Warehouse Management	✓	—	
Checks Printing	✓	—	Multiple Unit Tracking Per Item	✓	—	
QR Code for Location	✓	—				